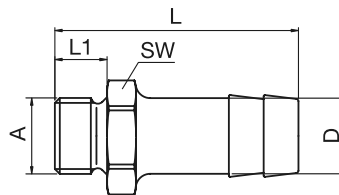




# PORTAGOMMA IN OTTONE RIDUZIONI - TAPPI

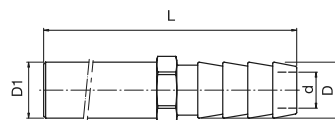
ELEMENTI NORMALIZZATI

PORTAGOMMA CON FILETTO MASCHIO



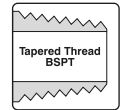
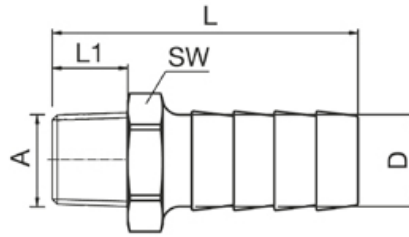
PART N°	A	D	L	L1	CHIAVE PER ESAGONO INTERNO
M8 R1/8	1/8" BSP	8	29,5	7,5	14
M10 R1/8	1/8" BSP	10	29	7	12
M10 R3/8	3/8" BSP	10	40	12	17
M13 R1/4	1/4" BSP	13	31,5	9	14
M13 R1/8	1/8" BSP	13	31,5	9	14
M13 R3/8	3/8" BSP	13	42	18	17
M16 R3/8	3/8" BSP	16	35,5	9	17


PORTAGOMMA PROLUNGATO



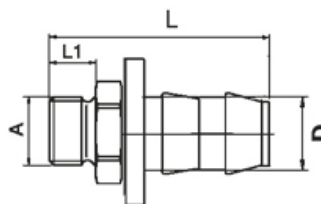
PART N°	D	D1	d	L	CHIAVE PER ESAGONO INTERNO
1/8 X 100	10	1/8" BSP	6	100	6
1/8 X 125	10	1/8" BSP	6	125	6
1/4 X 100	13	1/4" BSP	8	100	6
1/4 X 125	13	1/4" BSP	8	125	6
1/4 X 150	13	1/4" BSP	8	150	6


CONNETTORE PER TUBO CON FILETTATURA CONICA BSPT



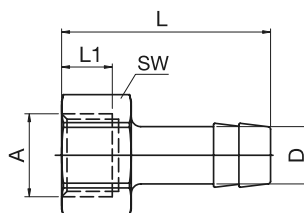
PART N°	A - BSPT	D inch	D mm	L	SW	
MH02/04	1/8"	1/4"	6	34	10	25
MH02/06	1/8"	3/8"	10	34	12	25
MH04/04	1/4"	1/4"	6	37	14	25
MH04/06	1/4"	3/8"	10	37	14	25
MH04/08	1/4"	1/2"	13	37	14	25
MH06/06	3/8"	3/8"	10	37	17	25
MH06/08	3/8"	1/2"	13	37	17	25
MH06/10	3/8"	5/8"	16	40	17	25
MH06/12	3/8"	3/4"	19	44	21	25
MH08/06	1/2"	3/8"	10	40.5	21	25
MH08/08	1/2"	1/2"	13	40.5	21	25
MH08/12	1/2"	3/4"	19	46.5	21	25
MH08/16	1/2"	1"	25	50	27	25
MH12/06	3/4"	3/8"	10	42	27	10
MH12/08	3/4"	1/2"	13	42	27	10
MH12/12	3/4"	3/4"	19	48	27	10
MH12/16	3/4"	1"	25	50.5	27	10
MH16/08	1"	1/2"	13	45.5	34	10
MH16/12	1"	3/4"	19	54	34	10
MH16/16	1"	1"	25	54	34	10
MH24/20	1-1/2"	1-1/4"	32	58	48	10
MH24/24	1-1/2"	1-1/2"	38	58	48	10


PUSH LOCK - CONNETTORE PER TUBO CON FILETTATURA PARALLELA



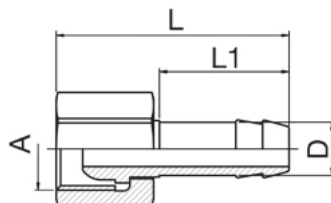
PART N°	A	D	L	L1	
P10R1/8	R1/8	10	39	7	10
P10R1/4	R1/4	10	39	7	10
P10M14	M14x1.5	10	42	7	10
P10R3/8	R3/8	10	43	7	10
P13R1/4	R1/4	13	39	10	10
P13R3/8	R3/8	13	43	10	10
P13R1/2	R1/2	13	43	10	10

CONNETTORE PER TUBO CON FILETTATURA PARALLELA



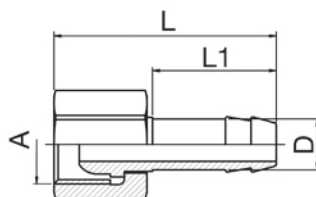
PART N°	A	D	L	L1	SW	
F10R1/8	1/8" BSP	10	33	8	14	25
F10R1/4	1/4" BSP	10	33	8	17	25
F10M14	M14x1.5	10	32	10	17	10
F13R1/4	1/4" BSP	13	39	8	17	25
F13M16	M16x1.5	13	40	10.5	22	10
F13R3/8	3/8" BSP	13	40	8	19	25

CONNETTORE PER TUBO CON FILETTATURA BSPP, DADO ORIENTABILE E SEDE A CONO DI 60°



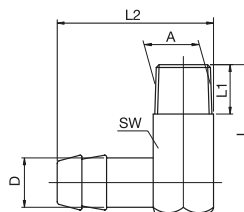
PART N°	A	D	L	L1	SW	
CM14	M14x1.5	10	39.5	22	17	10
CR1/4	G 1/4	10	39.5	22	17	10
CM16	M16x1.5	13	39	25	19	10
CR3/8	G 3/8	13	39	25	19	10
CR1/2	G 1/2	13	45	25	24	10
CM24	M24x1.5	19	52	32	30	10
CR3/4	G 3/4	19	52	32	30	10
CR1	G 1"	25	55	32	38	5

CONNETTORE PER TUBO CON FILETTATURA BSPP, DADO ORIENTABILE E SEDE PIATTA



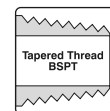
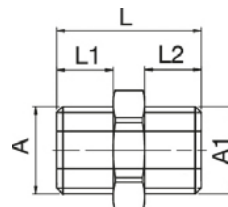
PART N°	A	D	L	L1	SW	
CFR3/8-10	G 3/8	10	39	25	22	10
CFR3/8-13	G 3/8	13	39	25	22	10
CFR1/2-13	G 1/2	13	39	25	24	10
CFR3/4-10	G 3/4	10	34	18	29	5
CFR3/4-13	G 3/4	13	36	22	29	5
CFR3/4-19	G 3/4	19	52	32	32	5
CFR1-19	G 1	19	43	25	37	5
CFR1-25	G 1	25	55	32	38	5
CFR1.1/4-32	G 1-1/4	32	55	32	48	1
CFR1.1/2-38	G 1-1/2	38	55	32	52	1

CONNETTORE FLESSIBILE A 90°



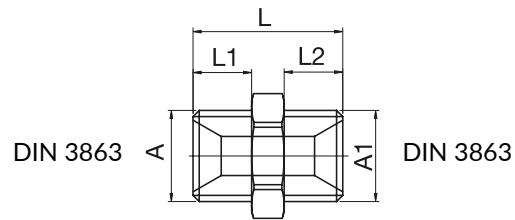
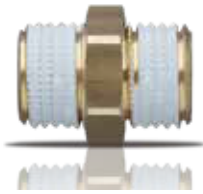
PART N°	A	D	L	L1	L2	SW	
V10M8	M8x0.75	10	27	9	39.5	15	25
V10M10	M10x1	10	27	9	31	11	25
V10R1/8	1/8" BSP	10	24	10	32.5	10	25
V10R1/4	1/4" BSP	10	30	11	38.5	12	25
V13R1/4	1/4" BSP	13	30	10	38.5	13	25
V13M14	M14x1.5	13	34	11	42	17	10
V13R3/8	3/8" BSP	13	37	11	44	19	25
V19M24	M24x1.5	19	47	12	56	24	10
V19R1/2	1/2" BSP	19	47	15	58.5	24	10

DOPPIO RACCORDO CON FILETTATURA CONICA



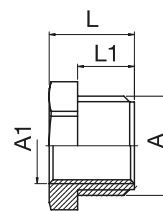
PART N°	A	A1	L	SW	
EC02/02	1/8"	1/8"	23	10	10
EC04/04	1/4"	1/4"	29	14	10
EC06/06	3/8"	3/8"	29	17	10
EC08/08	1/2"	1/2"	35	21	10
EC12/12	3/4"	3/4"	37	27	10
EC16/16	1"	1"	43	34	10
EC20/20	1.1/4"	1.1/4"	46	42	10

DOPPIO RACCORDO CON FILETTATURA PARALLELA



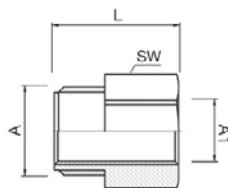
PART N°	A	A1	L	L1	L2	SW	
ZR1/8	G 1/8	G 1/8	21	8	8	17	10
ZM14	M14x1.5	M14x1.5	23	9	9	17	10
ZM14-R1/4	M14x1.5	G 1/4	23	9	9	17	10
ZR1/4	G 1/4	G 1/4	23	9	9	17	10
ZR1/4-R3/8	G 1/4	G 3/8	23	9	9	19	10
ZM16	M16x1.5	M16x1.5	23	9	9	19	10
ZM16-R3/8	M16x1.5	G 3/8	23	9	9	19	10
ZR3/8	G 3/8	G 3/8	23	9	9	19	10
ZR3/8-R1/2	G 3/8	G 1/2	29	9	12	24	10
ZR1/2-M14	G 1/2	M14x1.5	27	12	9	22	10
ZR1/2-M16	G 1/2	M16x1.5	27	12	9	22	10
ZR1/2	G 1/2	G 1/2	30	12	12	24	10
ZR1/2-R3/4	G 1/2	G 3/4	36	12	16	32	10
ZR1/2-R1/1	G 1/2	G 1	40	12	16	36	10
ZM24-R1/2	M24x1.5	G 1/2	36	16	12	27	10
ZR3/4	G 3/4	G 3	40	16	16	32	10
ZR3/4-M24	G 3/4	M24x1.5	40	16	16	32	10
ZR3/4-R1/1	G 3/4	G 1	40	16	16	36	10
ZR1/1-R1/1	G 1	G 1	42	16	16	36	10

RIDUTTORE RACCORDO



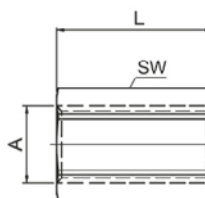
PART N°	A	A1	L	L1	SW	
GR1/4-R1/8	G 1/4	G 1/8"	11	7	17	10
GM14-M10	M14x1.5	M10X1	11	7	17	10
GR3/8-R1/4	G 3/8"	G 1/4"	13	9	19	10
GM18-M14	M18x1.5	M14x1.5	14	9	22	10
GR1/2-R3/8	G 1/2"	G 3/8"	18	12	24	10
GR3/4-R1/2	G 3/4"	G 1/2"	24	16	27	10
GM24-M16	M24x1.5	M16x1.5	24	16	27	10
GR1/1-R3/4*	G 1"	G 3/4"	28	19	34	1
GR11/2-R3/4*	G 1-1/2"	G 3/4"	32	22	50	1
GR11/2-R1/1*	G 1-1/2"	G 1"	32	22	50	1


CONVERTITORE RACCORDO



PART N°	A	A1	L	SW	
CN1/8-1/8	G 1/8	G 1/8	23	14	10
CN1/8-1/4	G 1/8	G 1/4	28	17	10
CN1/4-1/8	G 1/4	G 1/8	28	17	10
CN1/4-1/4	G 1/4	G 1/4	28	17	10
CN1/4-3/8	G 1/4	G 3/8	29	19	10
CN3/8-1/4	G 3/8	G 1/4	29	19	10
CN3/8-3/8	G 3/8	G 3/8	29	19	10
CN3/8-1/2	G 3/8	G 1/2	25	24	10
CN1/2-3/8	G 1/2	G 3/8	24	22	10
CN1/2-1/2	G 1/2	G 1/2	27	24	10
CN1/2-3/4	G 1/2	G 3/4	31	30	10

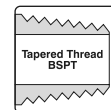
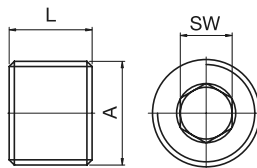
RACCORDO CON RIDUTTORE FEMMINA




PART N°	A	L	SW	
FN1/8	G 1/8	22	11	10
FN1/4	G 1/4	26	17	10
FN3/8	G 3/8	26	22	10
FN1/2	G 1/2	30	27	10
FN3/4	G 3/4	36	32	10
FN1/1	G 1	40	41	10

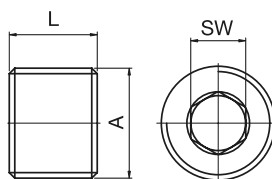



TAPPO DI PRESSIONE CON FILETTATURA CONICA



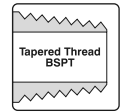
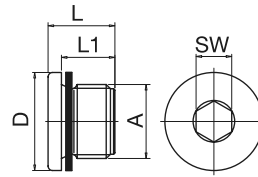
PART N°	A	L	SW	
RM8	M8x0.75	8	4	100
RM10	M10x1	8	5	100
R1/8	1/8" BSPT	8	5	100
RM12	M12x1.5	8	6	100
R1/4	1/4" BSPT	10	7	100
RM14	M14x1.5	10	7	100
R3/8	3/8" BSPT	10	8	100
R1/2	1/2" BSPT	10	10	100

TAPPO DI PRESSIONE CON FILETTATURA PARALLELA



PART N°	A	L	SW	
RM8C	M8x0.75	8	4	100
RM10C	M10x1	8	5	100
R1/8C	1/8" BSPT	8	5	100
RM12C	M12x1.5	8	6	100
R1/4C	1/4" BSPT	10	7	100
RM14C	M14x1.5	10	7	100
R3/8C	3/8" BSPT	10	8	100
R1/2C	1/2" BSPT	10	10	100

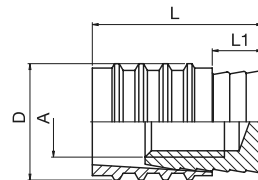
TAPPO ESAGONALE CON FILETTATURA PARALLELA



PART N°	A	D	L	L1	SW	
DM10	M10x1	14	11	8	5	25
DR1/8	G 1/8	14	11	8	5	25
DM12	M12x1.5	17	15	12	6	25
DR1/4	G 1/4	18	15	12	6	25
DM14	M14x1.5	19	15	12	6	25
DR3/8	G 3/8	22	15	12	8	25
DR1/2	G 1/2	26	18	14	10	25
DR3/4	G3/4"	32	21	16	12	1
DR1	G1	40	22.5	16	17	1
DR1-1/2*	G1-1/2"	55	22.5	16	24	1

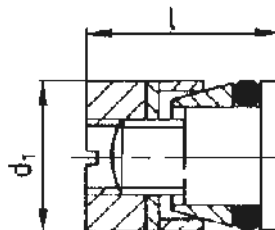
\*Con guarnizione O-ring

TAPPO A CANALE



PART N°	A	D	L	L1	
S6	M3	6	11.5	3.5	25
S8	M4	8	11.5	3.5	25
S10-1	M6	10	14	4	25
S12	M6	12	14	4	25
S16	M8	16	16	4	25

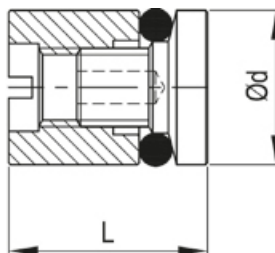
TAPPO A CANALE



MATERIALE: Ottone  
GUARNIZIONE: O-ring FMK

PART N°	d1	LENGTH	
KN105-6	6	10	10
KN105-8	8	11	10
KN105-10	10	11	10
KN105-12	12	11	10
KN105-14	14	13	10
KN105-16	16	13	10

TAPPO A CANALE



MATERIALE: Ottone  
GUARNIZIONE: O-ring FMK

PART N°	L	d	CHANNEL BORE D H13	INSTALLATION KEY	
CP6	15	6	6	CPT6-...	10
CP8	15	8	8	CPT8-...	10
CP10	15	10	10	CPT10-...	10
CP12	15	12	12	CPT12-...	10

TAPPO A CANALE



PART N°	LENGTH	PLUG DIAMETER	
CPT6-150	150	6	1
CPT6-300	300	6	1
CPT8-150	150	8	1
CPT8-300	300	8	1
CPT10-150	150	10	1
CPT10-300	300	10	1
CPT12-150	150	12	1
CPT12-300	300	12	1



[www.eleenorm.com](http://www.eleenorm.com)