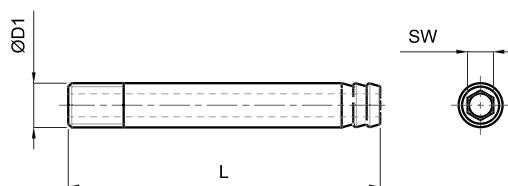




PORTAGOMMA CON ESAGONO

ELEMENTI NORMALIZZATI

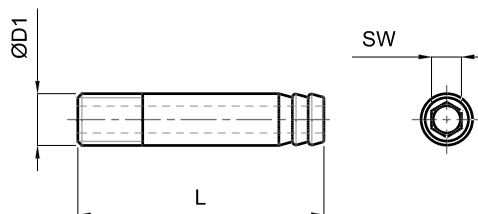
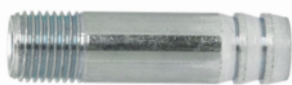
PORTAGOMMA CON ESAGONO PROLUNGATO



MATERIALE: ottone

D1	SW		L	
		100	125	150
1/8" GAS	6	-	-	-
1/4" GAS	6	-	-	-

PORTAGOMMA CON ESAGONO



MATERIALE: Ferro zincato

D1	SW	L
1/8" GAS	4	40
1/4" GAS	6	50



www.eleenorm.com